

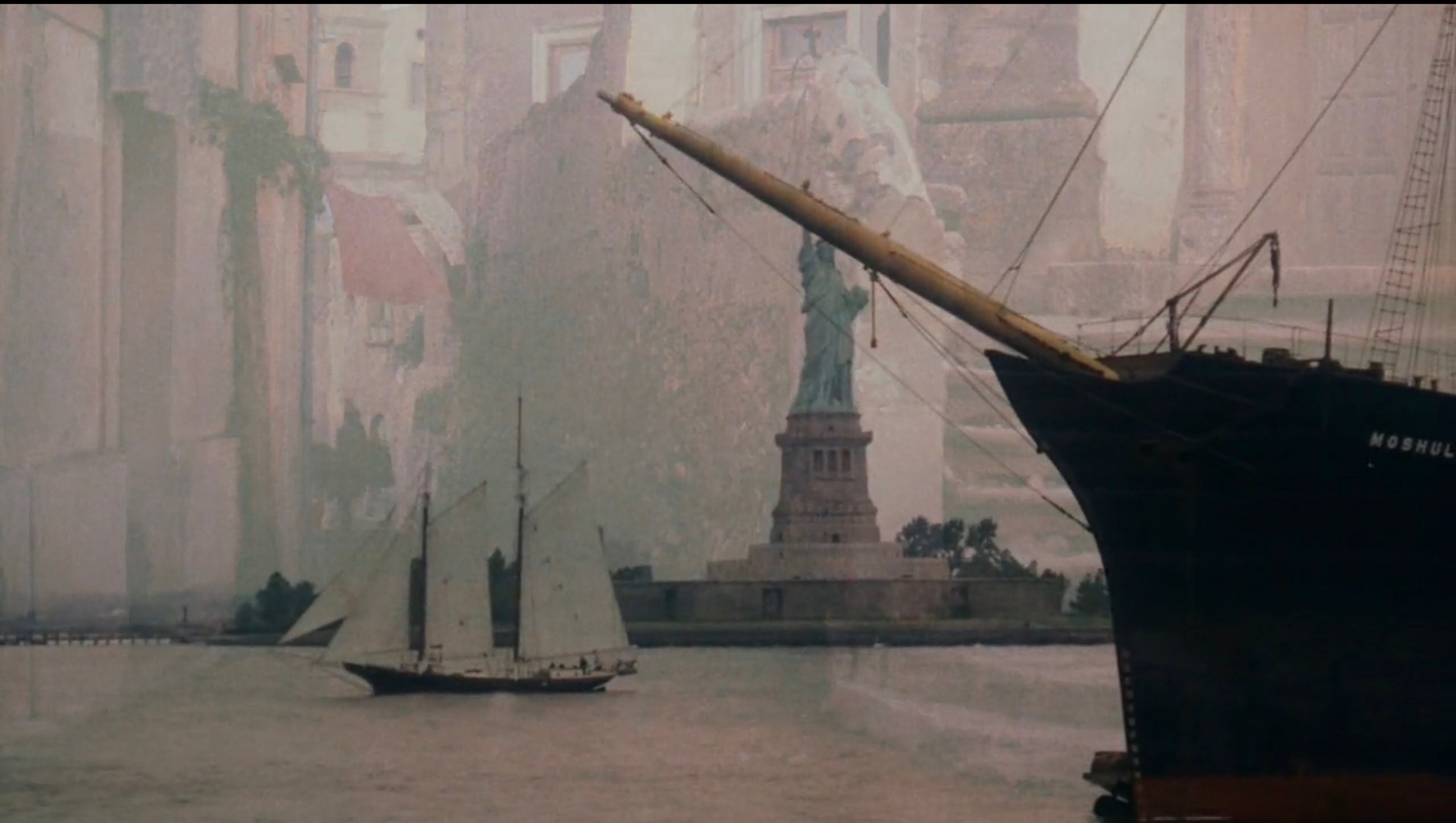




MARIO PUZO'S

**The Godfather**  
**PART II**

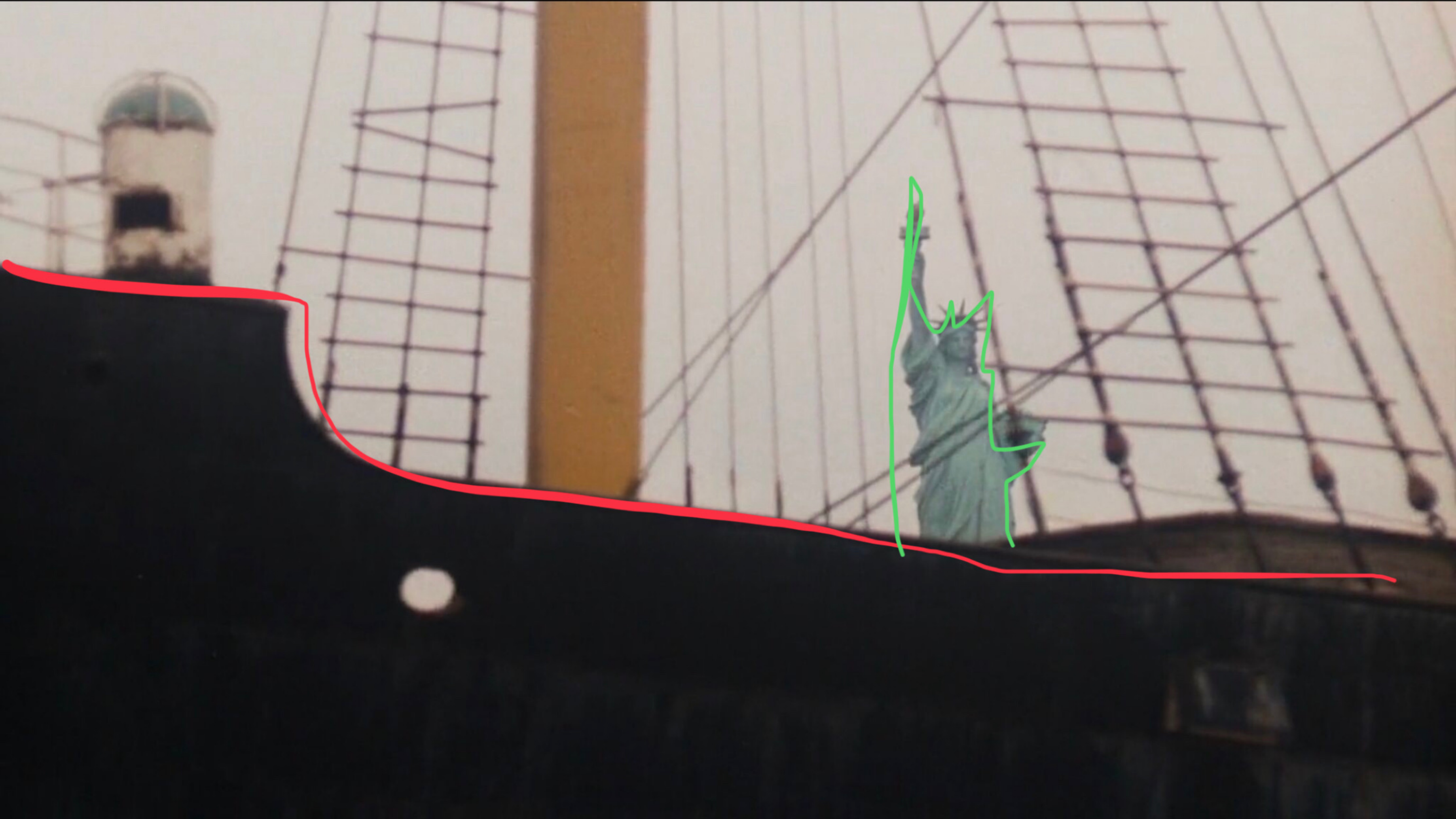












































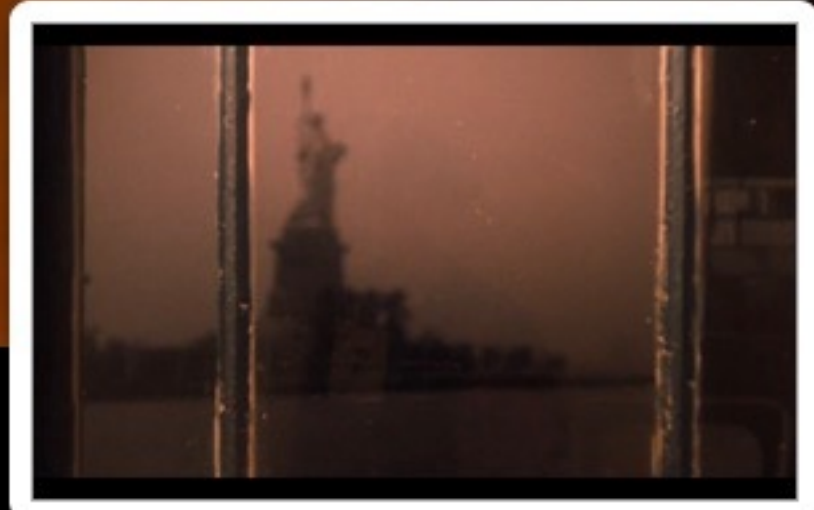








Red Star Lines  
**7**

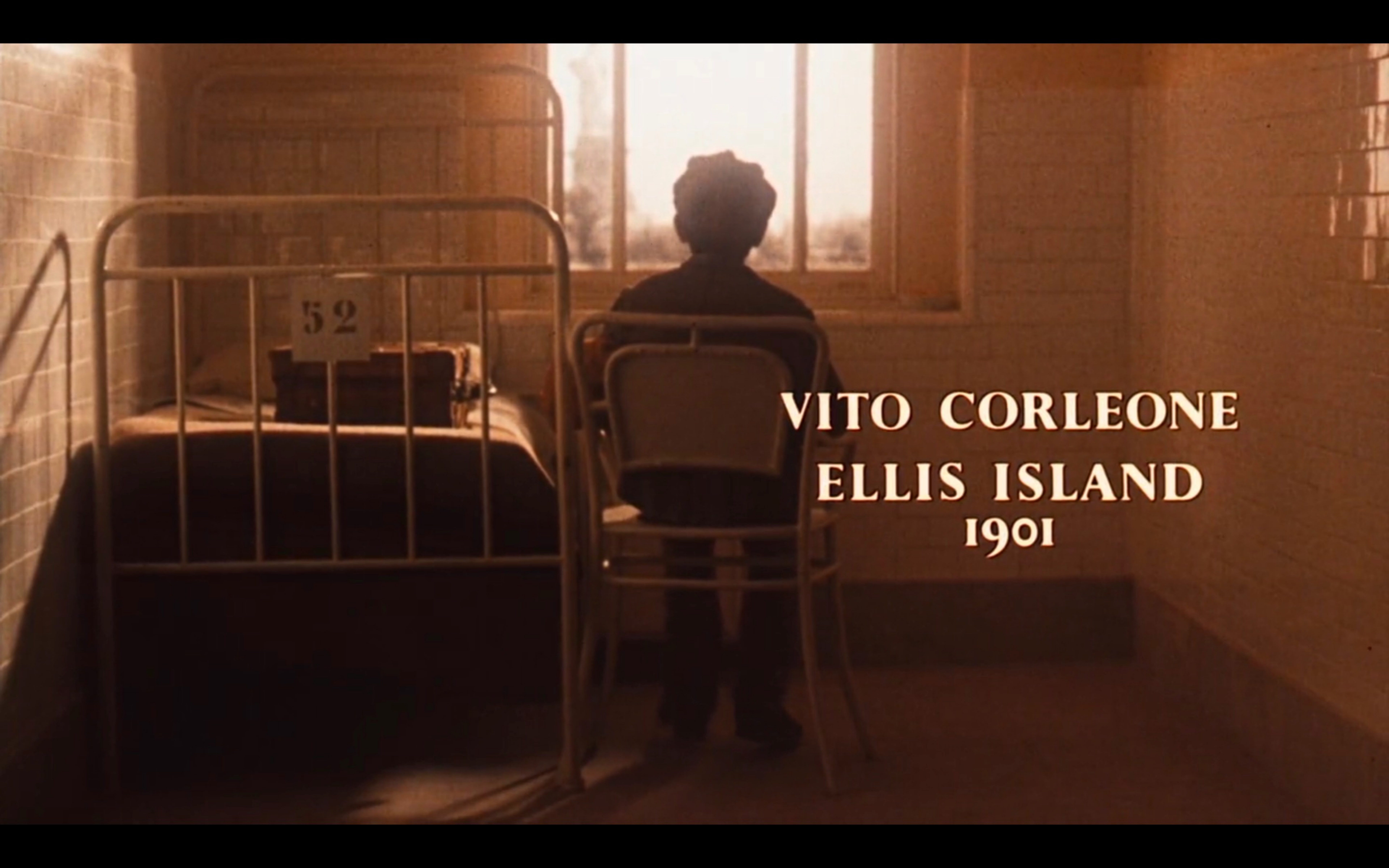






52



A man is sitting on a metal chair in a prison cell, looking out a window. The cell contains a metal bed frame with a sign that says "52". The scene is dimly lit, with light coming from the window.

52

**VITO CORLEONE**  
**ELLIS ISLAND**  
**1901**





Central Savings Bank of Nevada

1977 JUN 20 0000 1000 00

CASHIERS CHECK





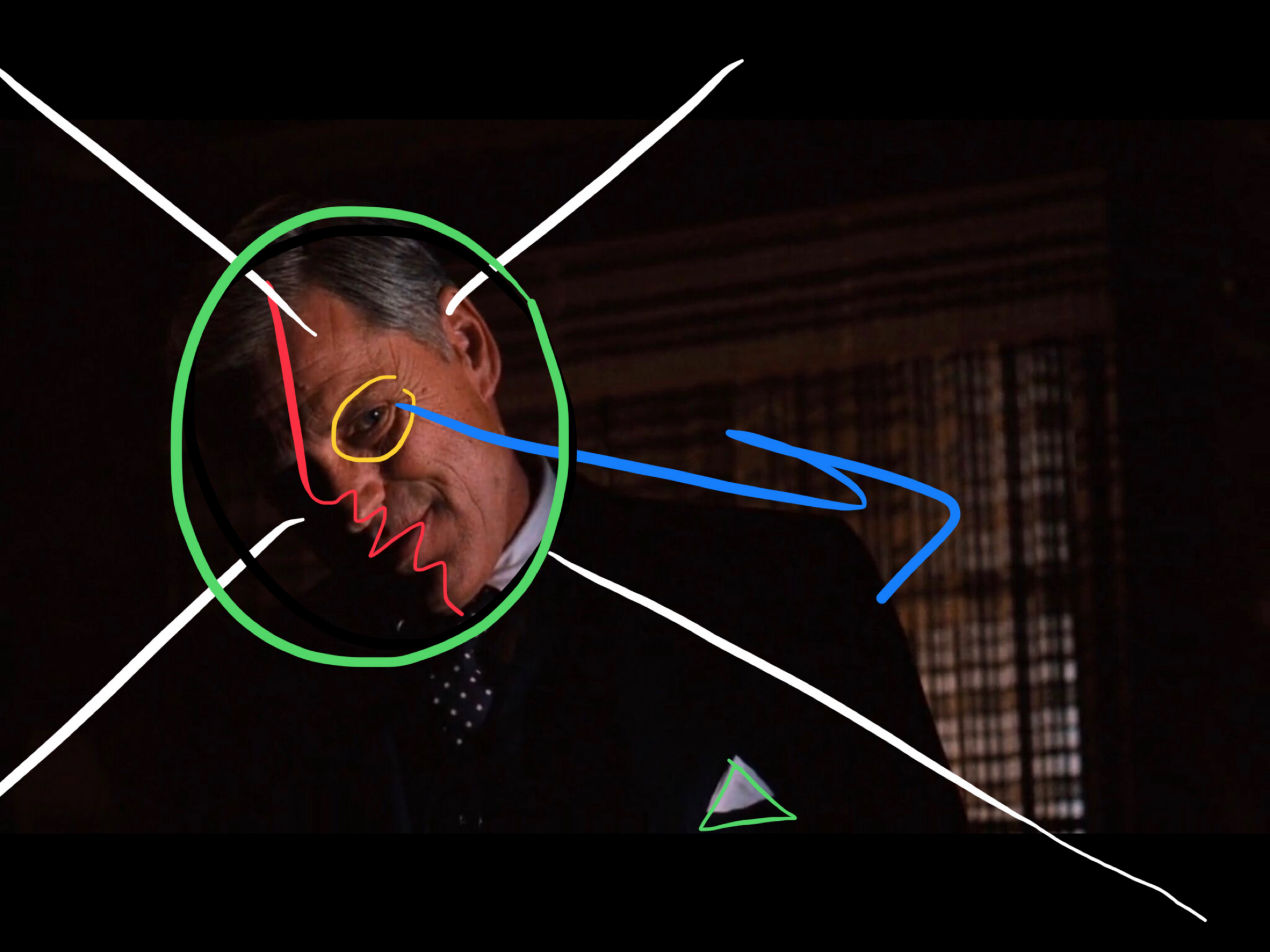








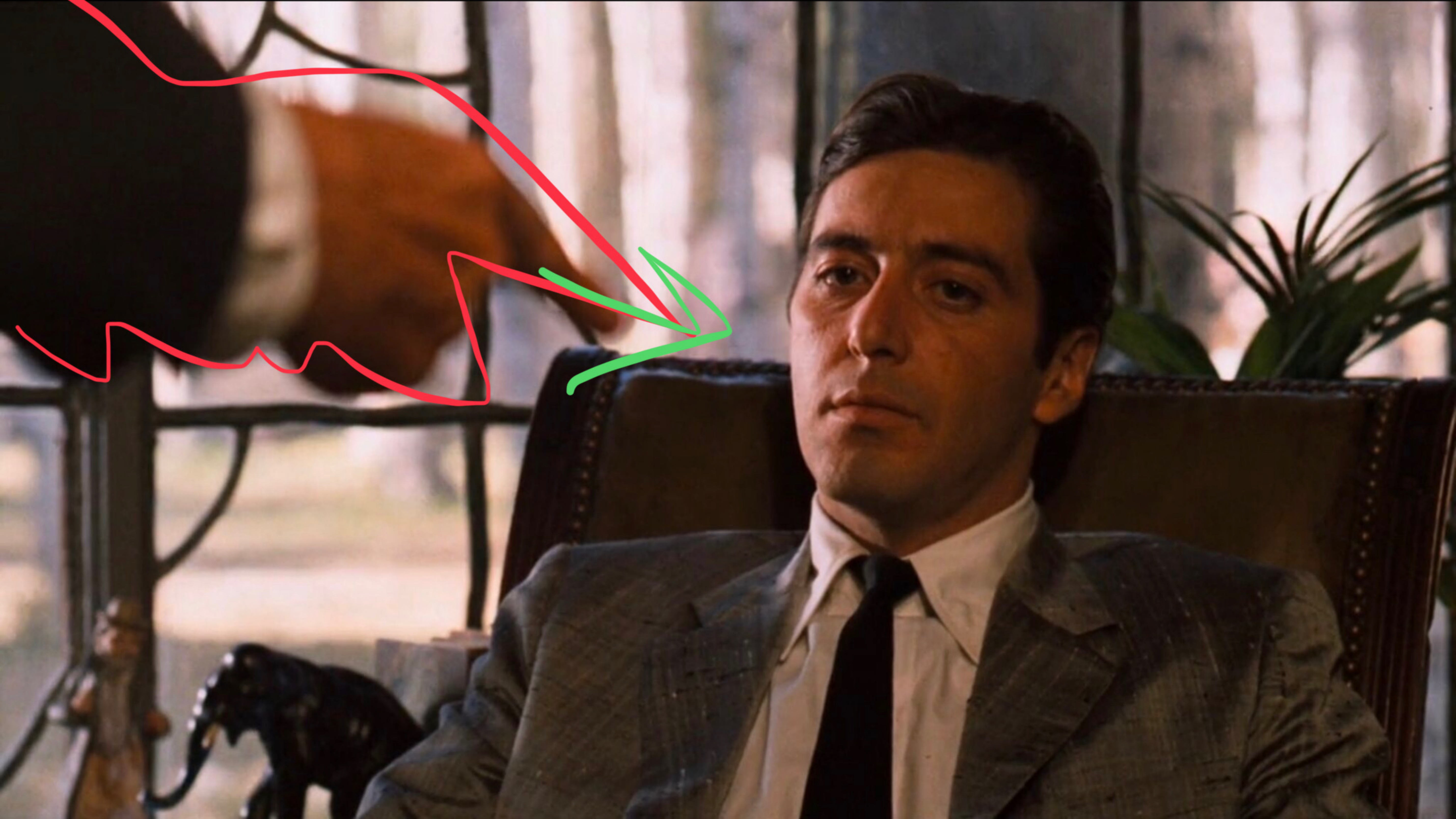






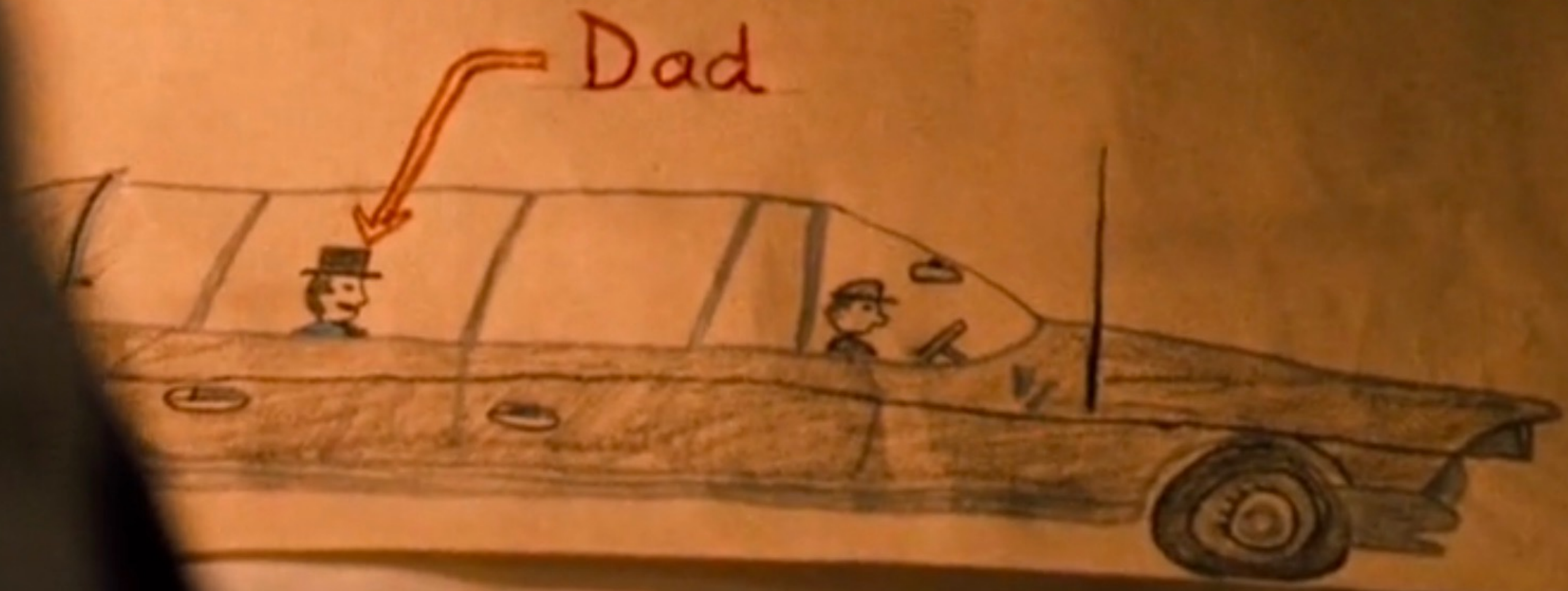








Do you like it  
yes  no



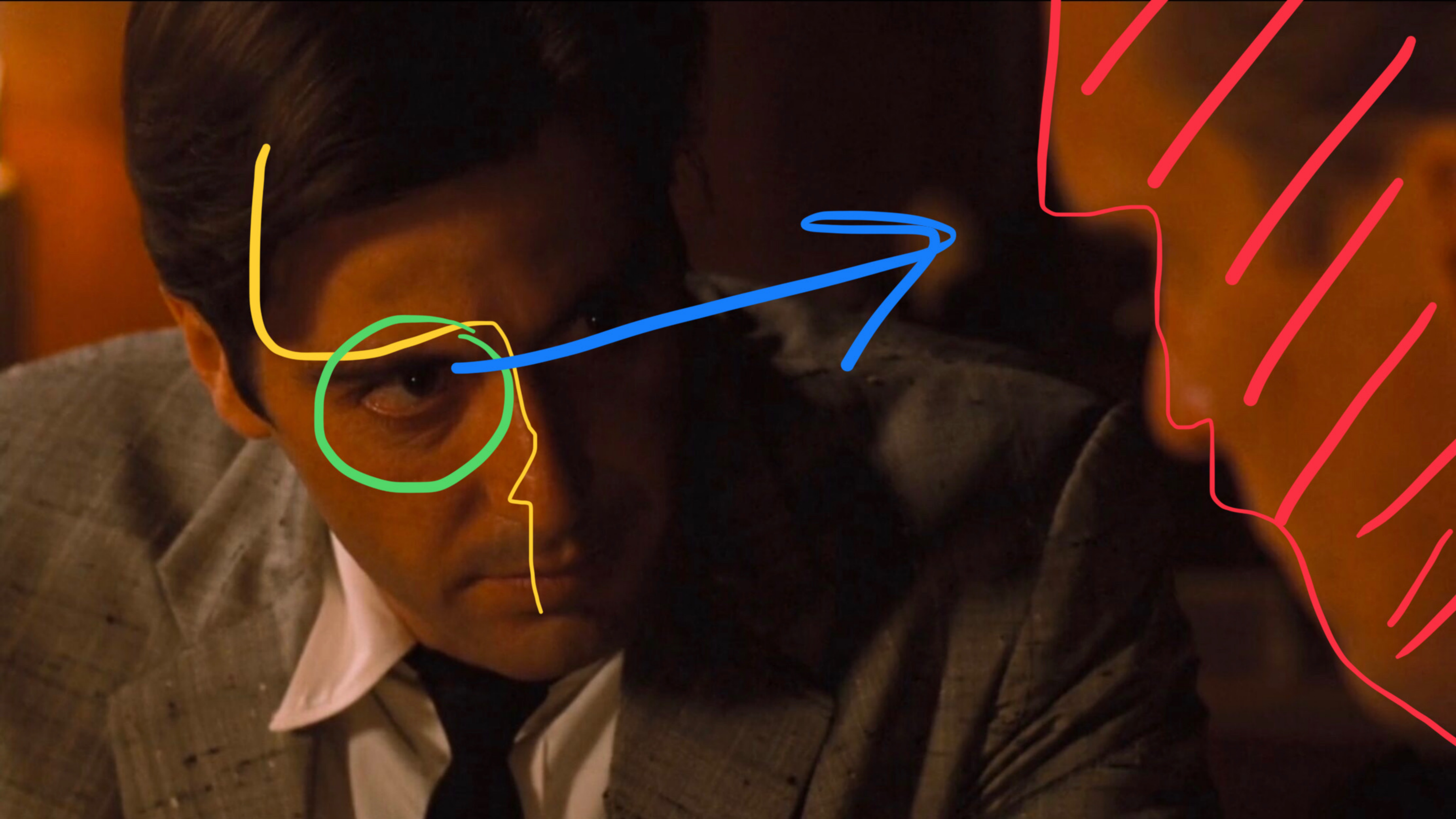








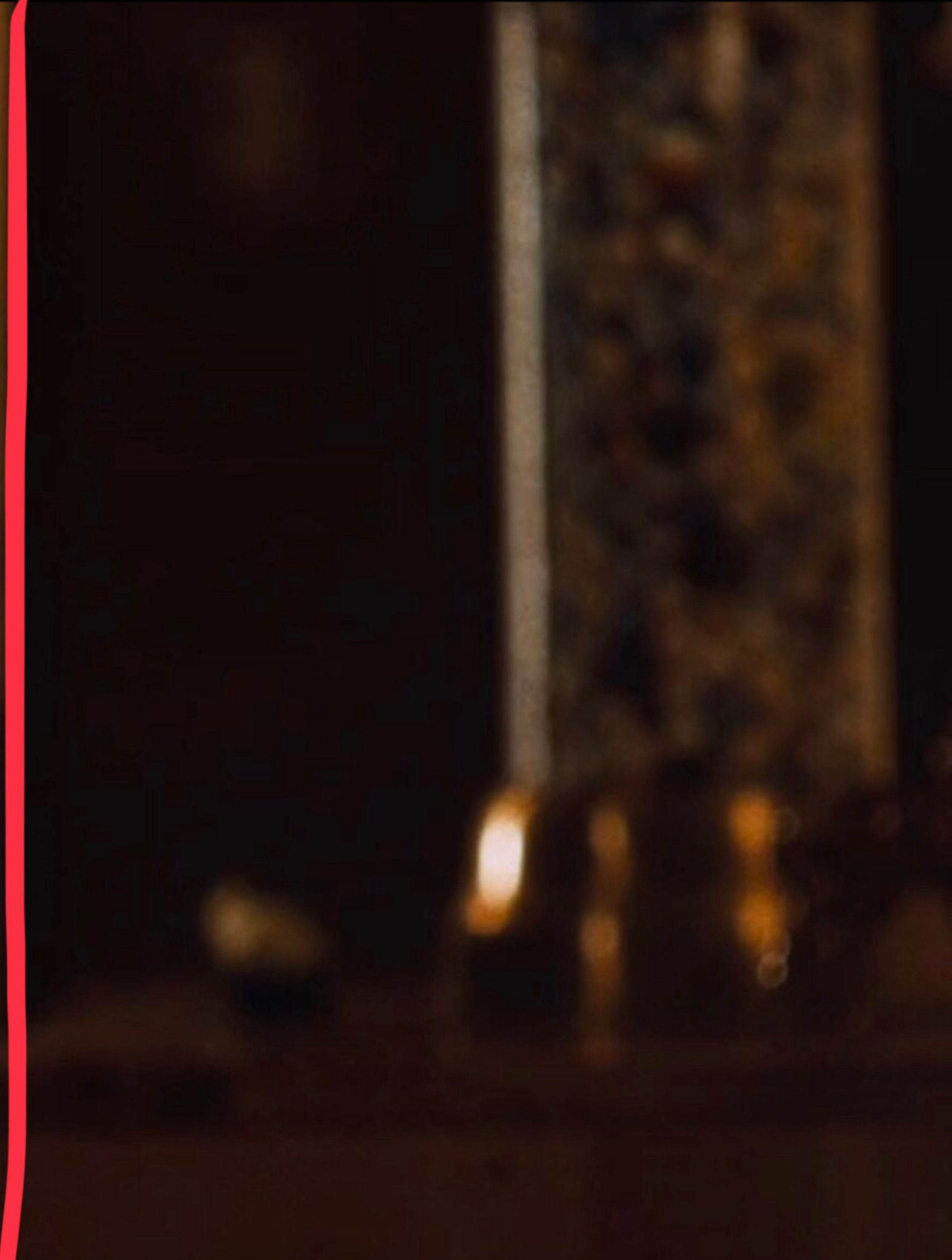




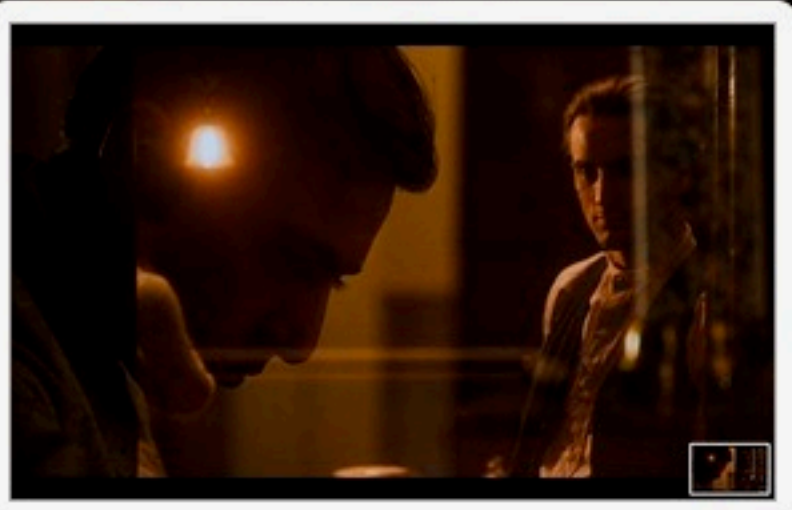




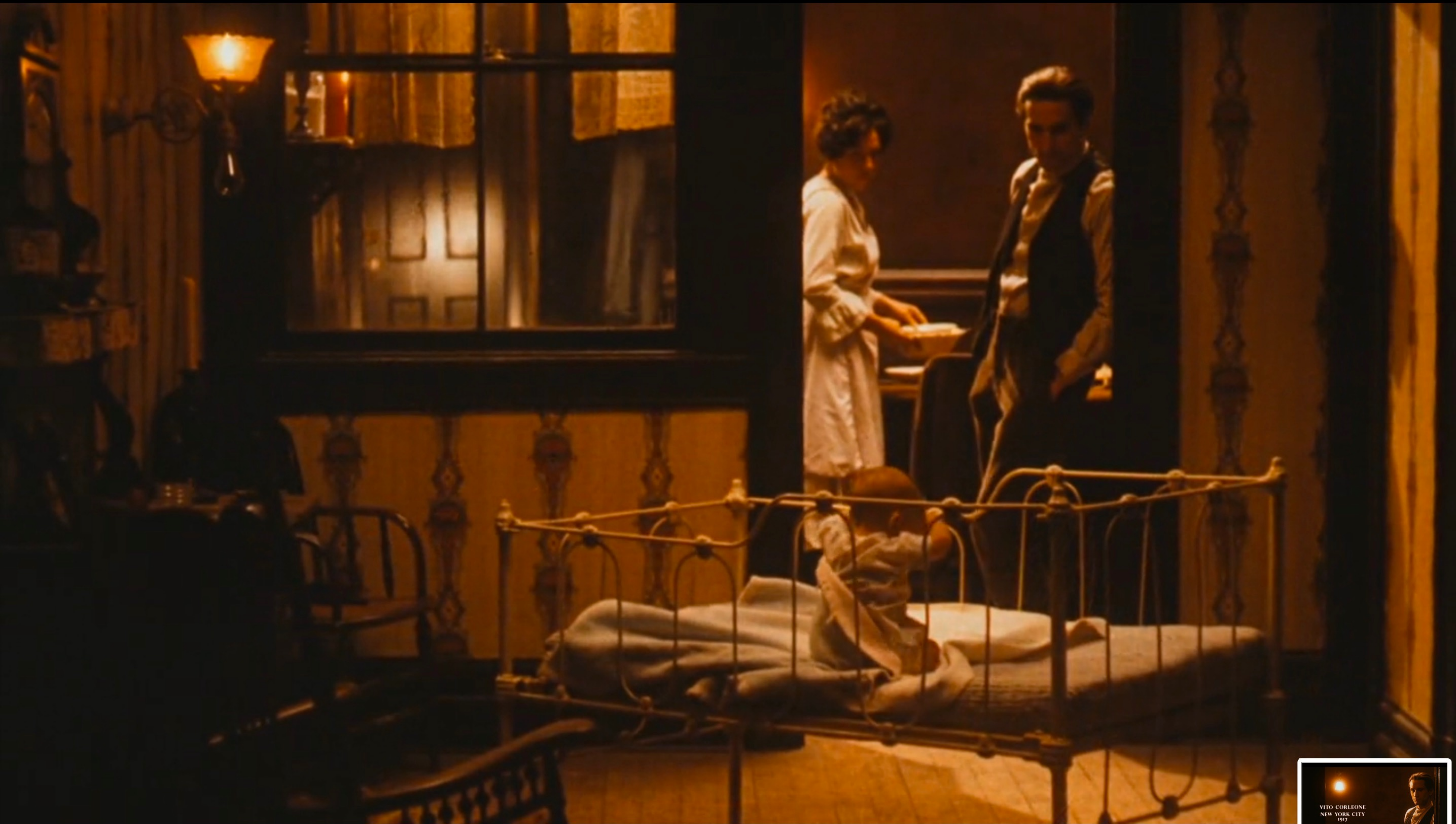




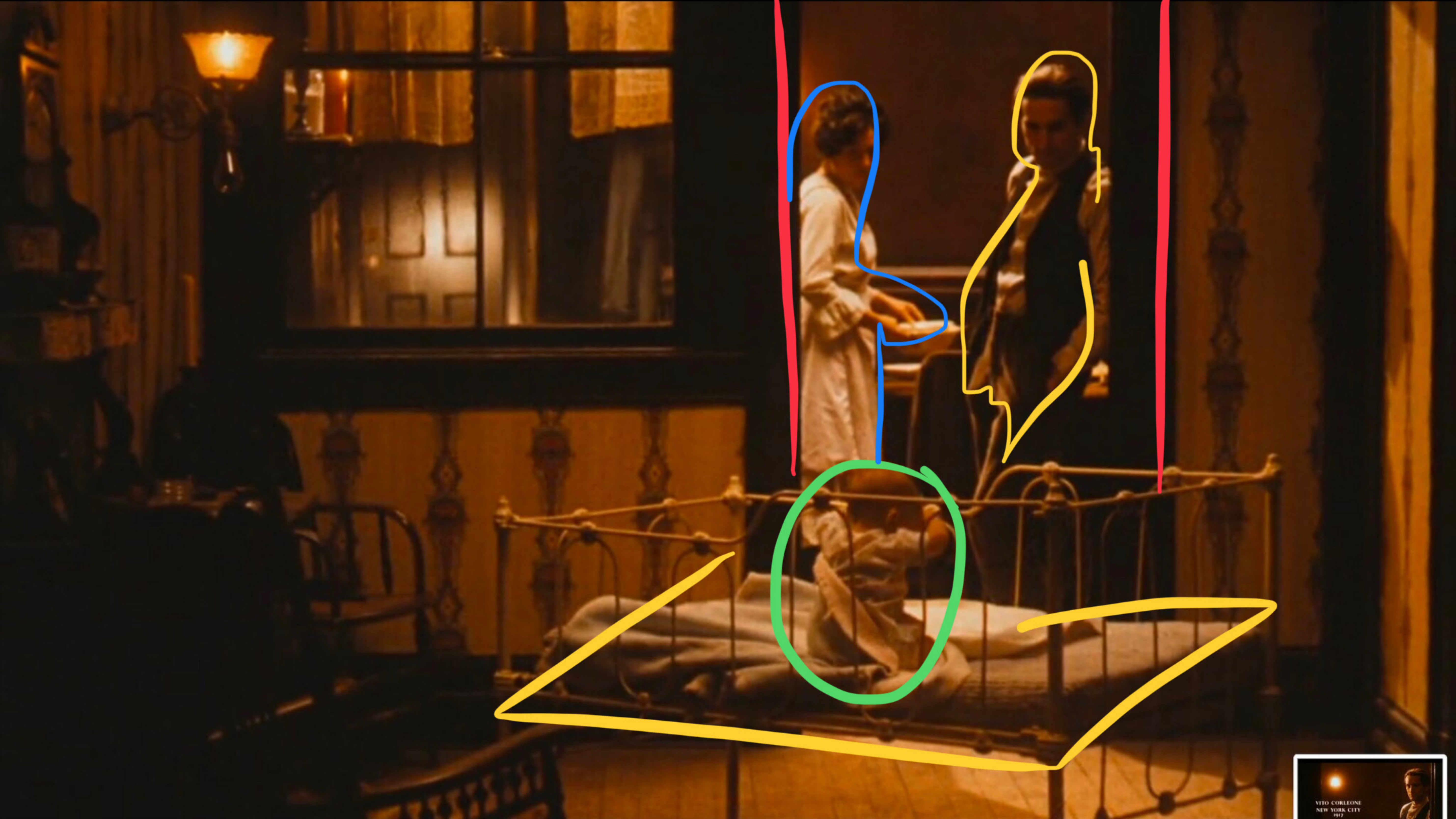












VITO CORLEONE  
NEW YORK CITY  
1917











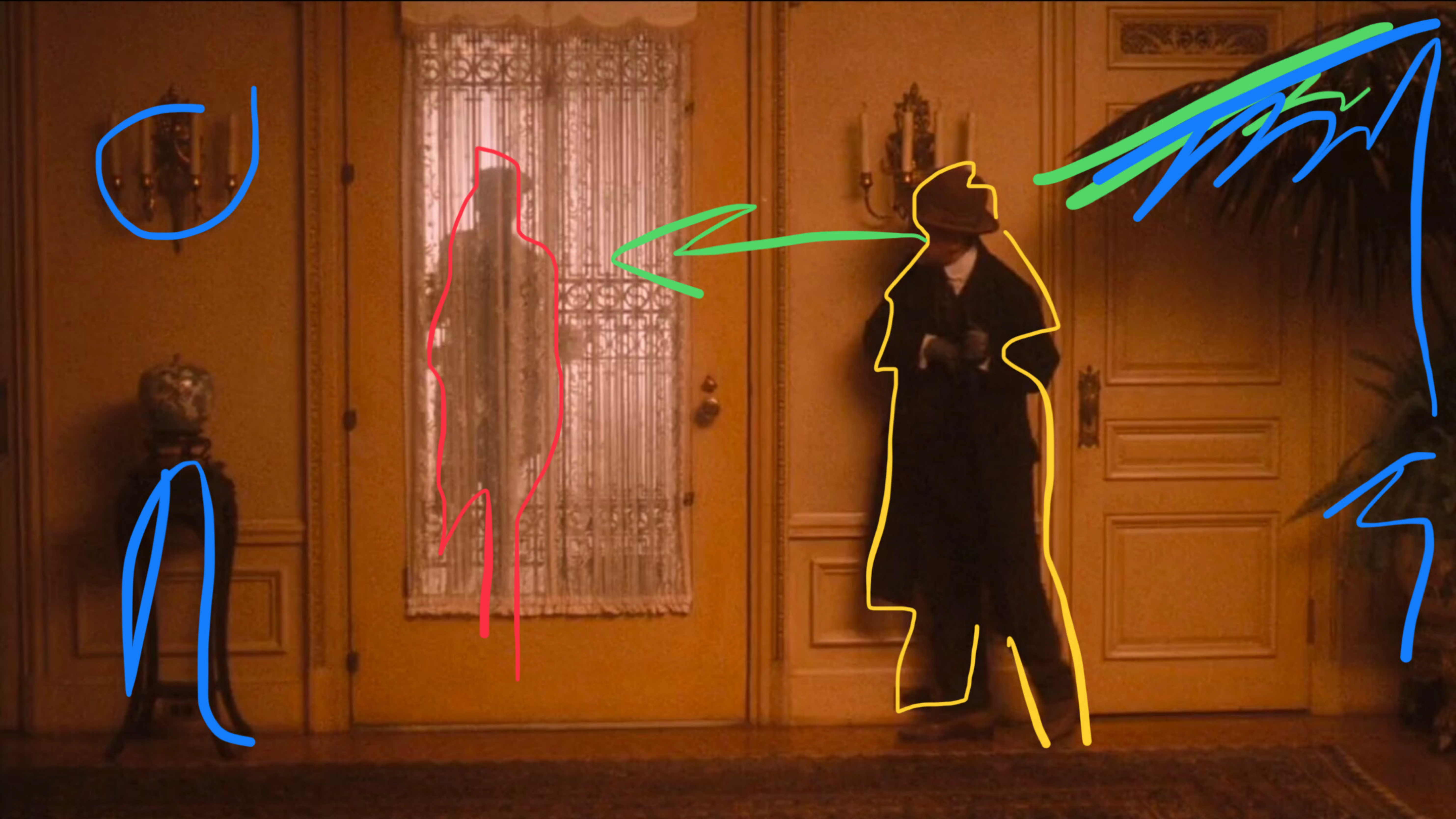








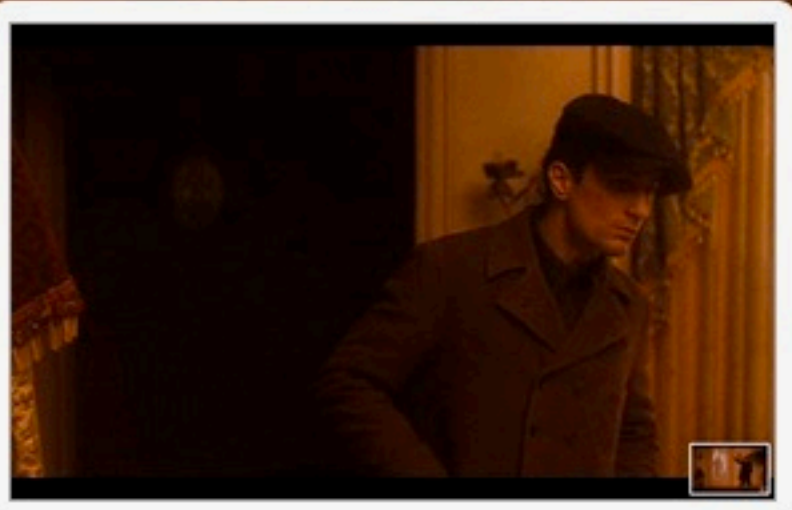




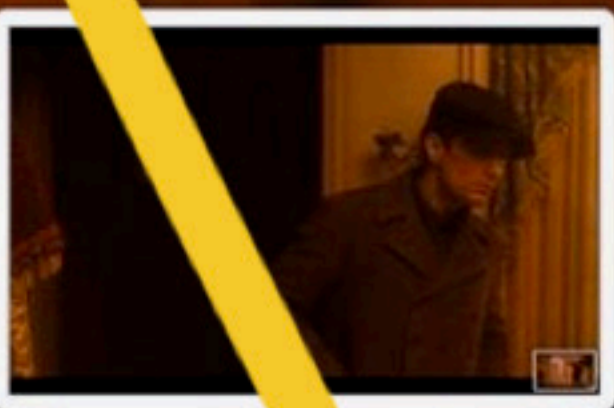
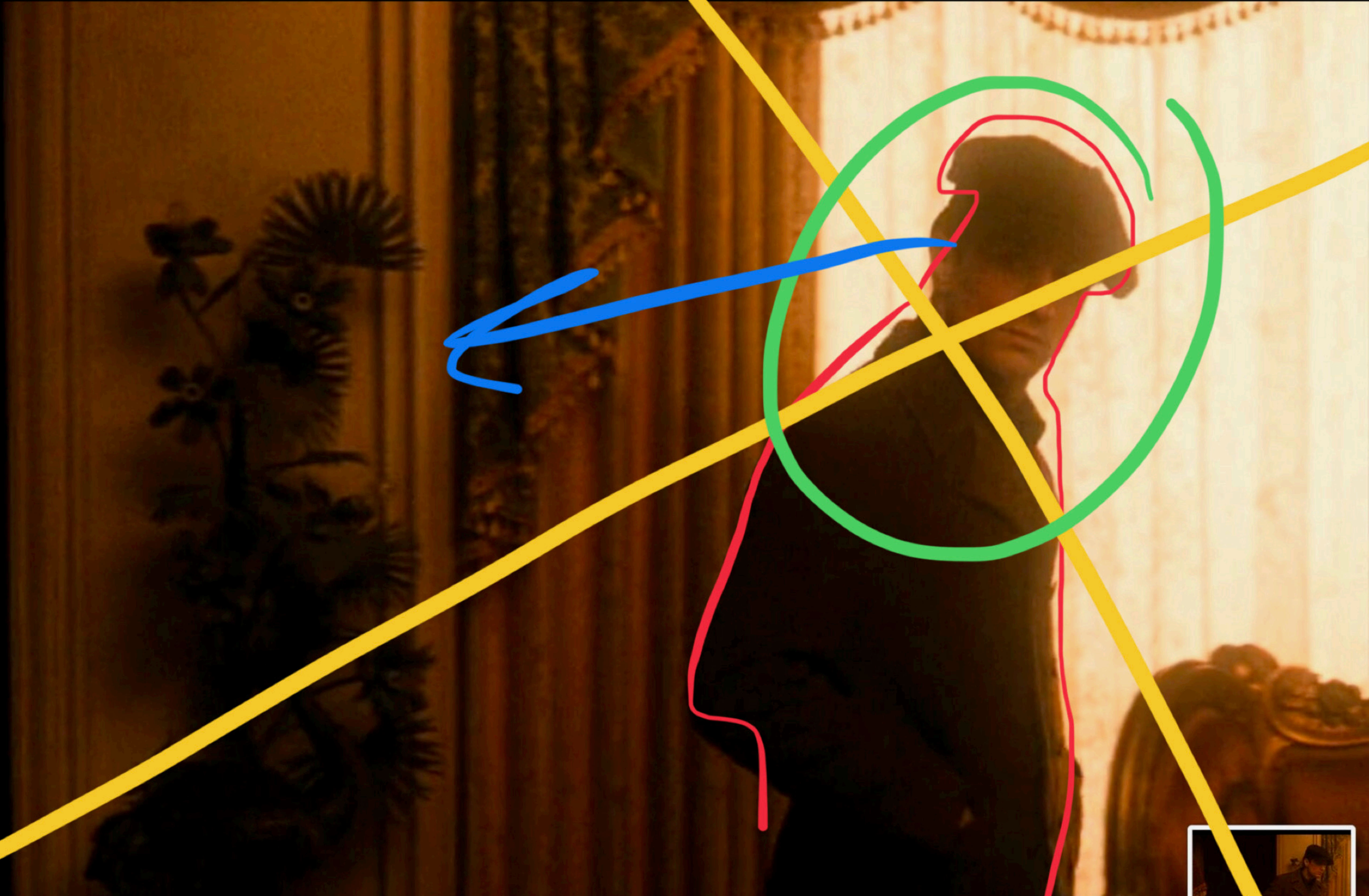




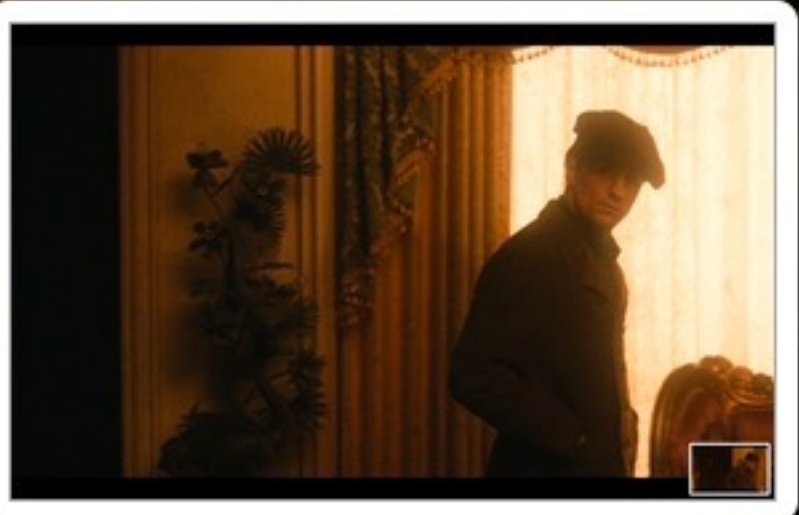








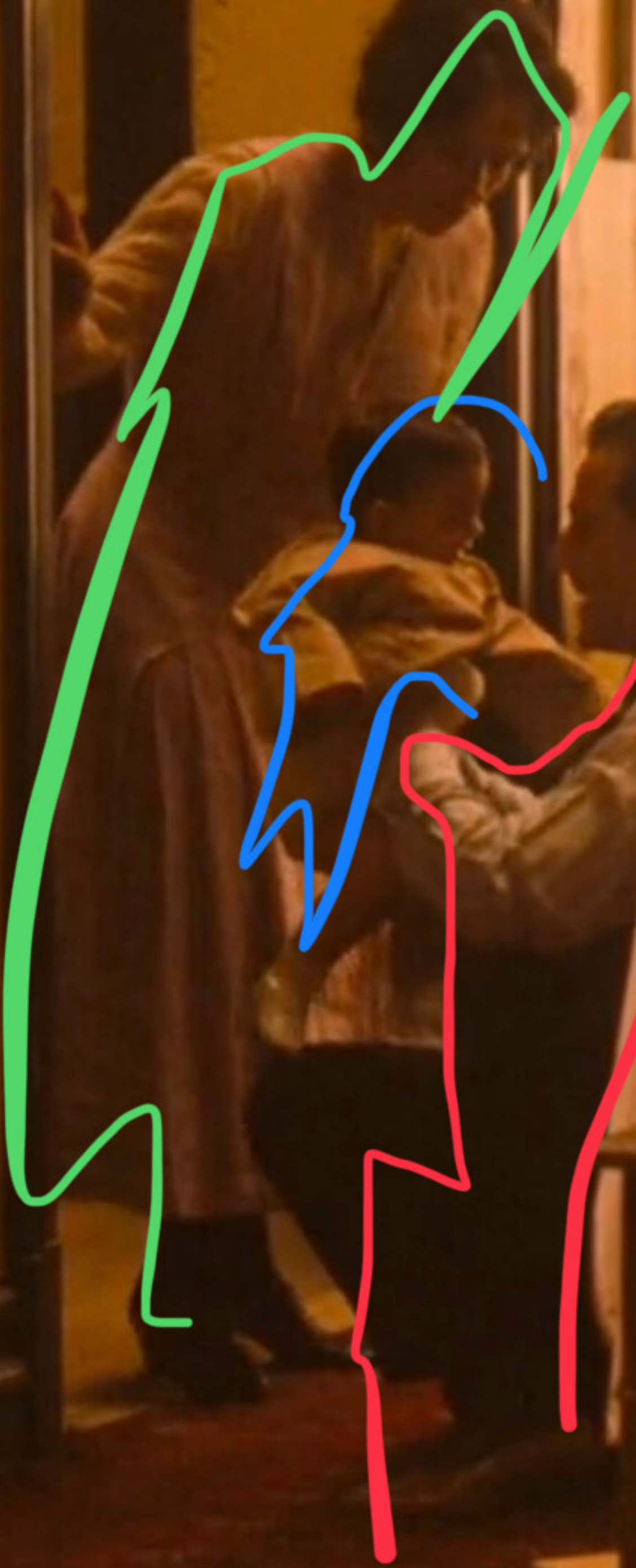
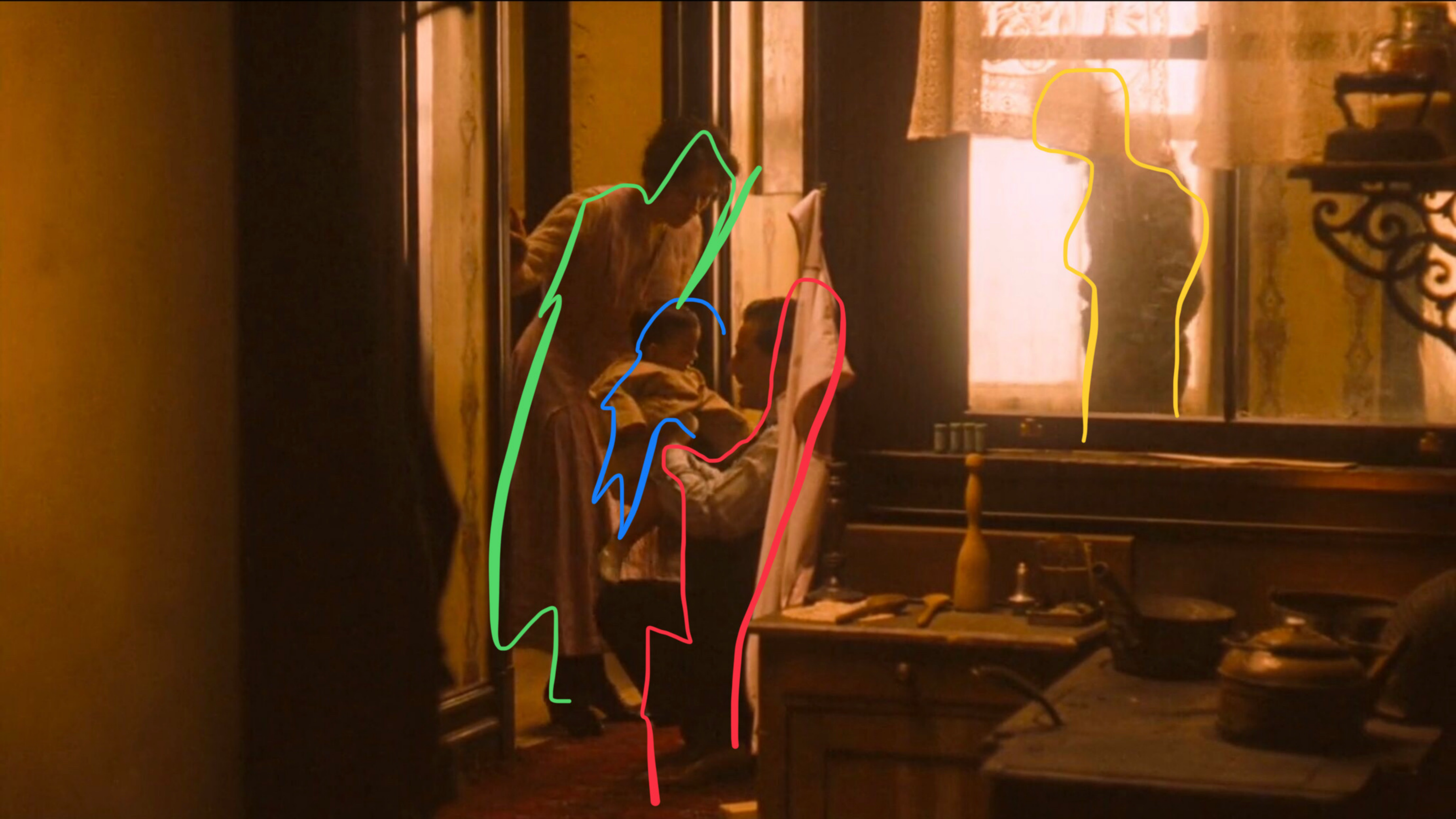
























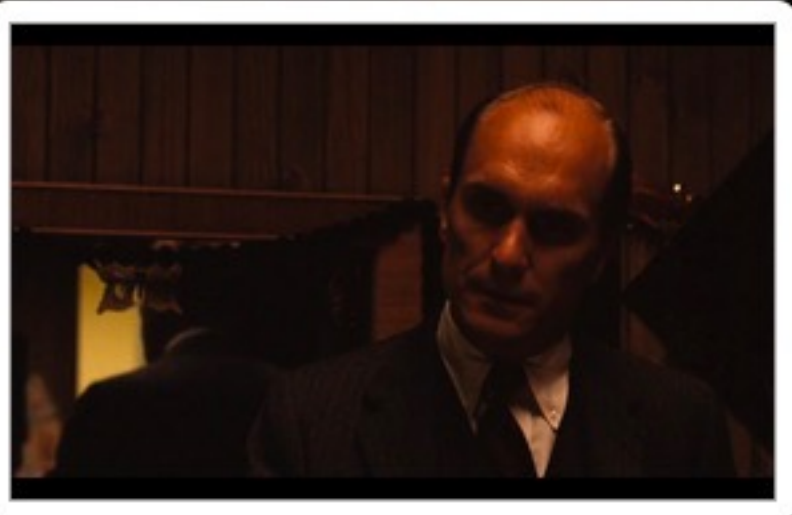




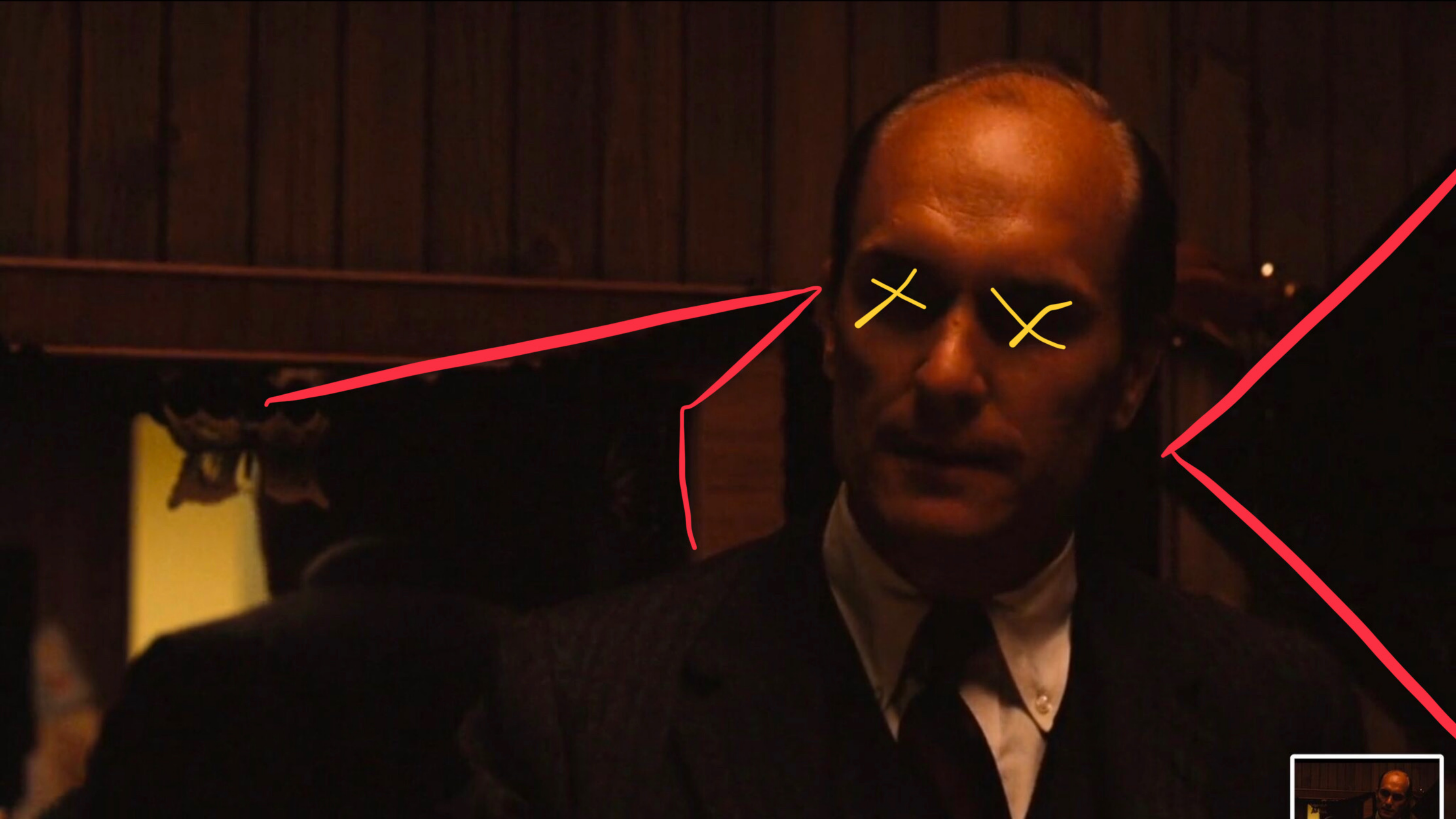




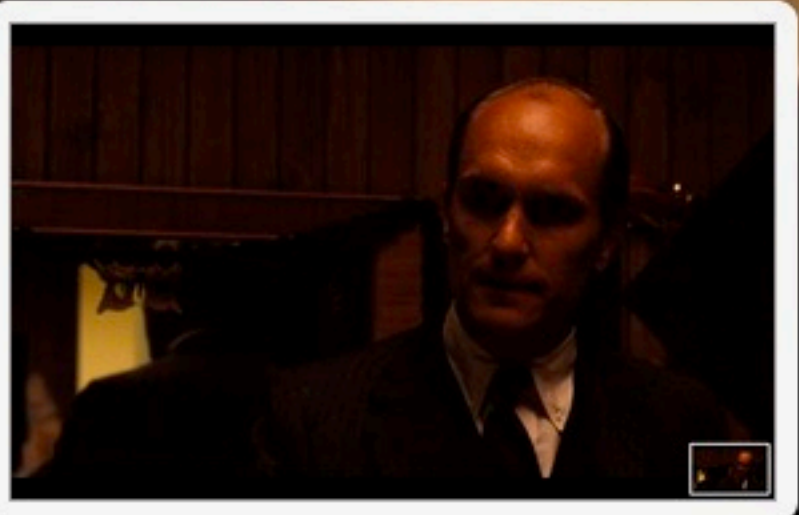




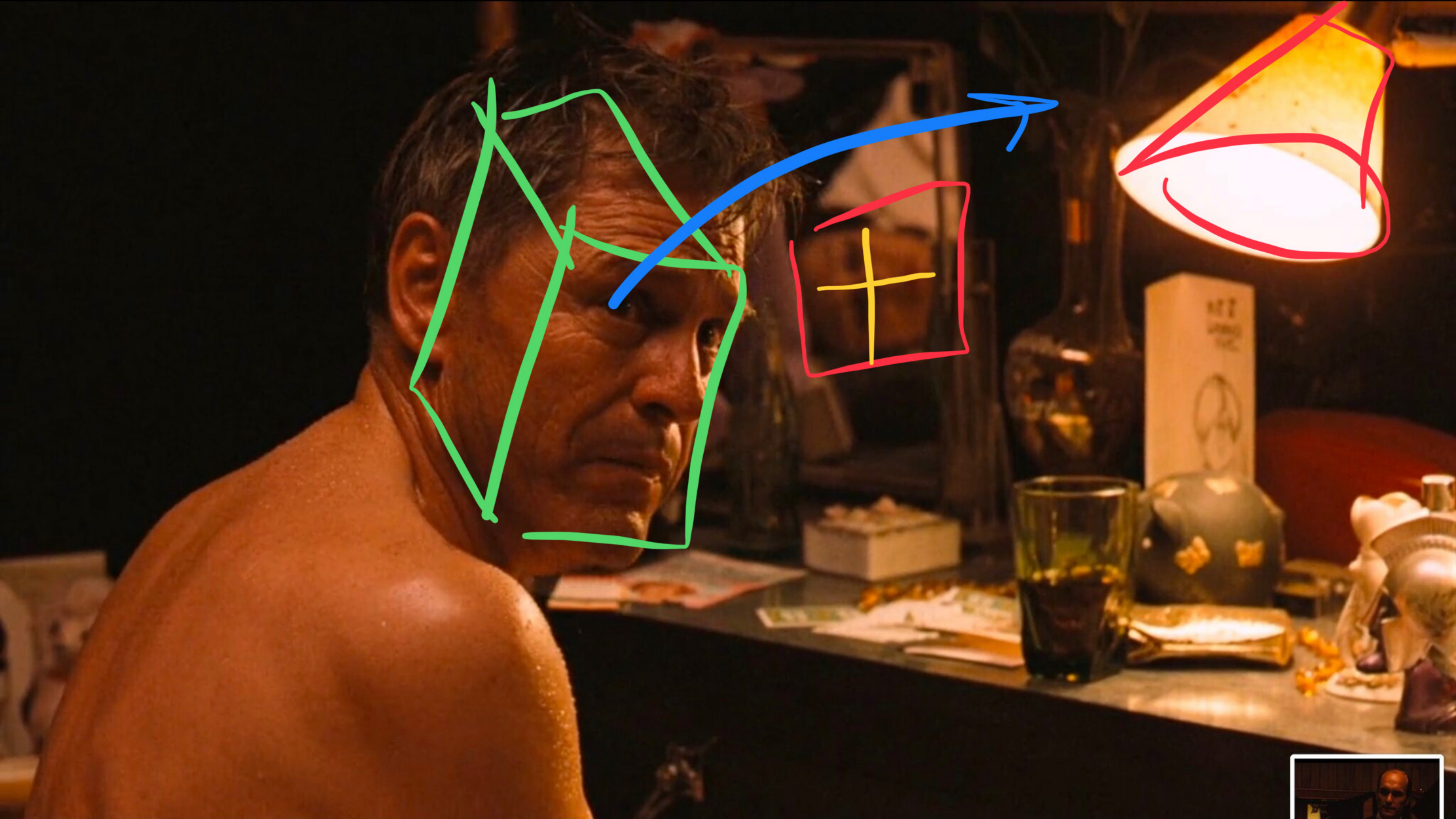








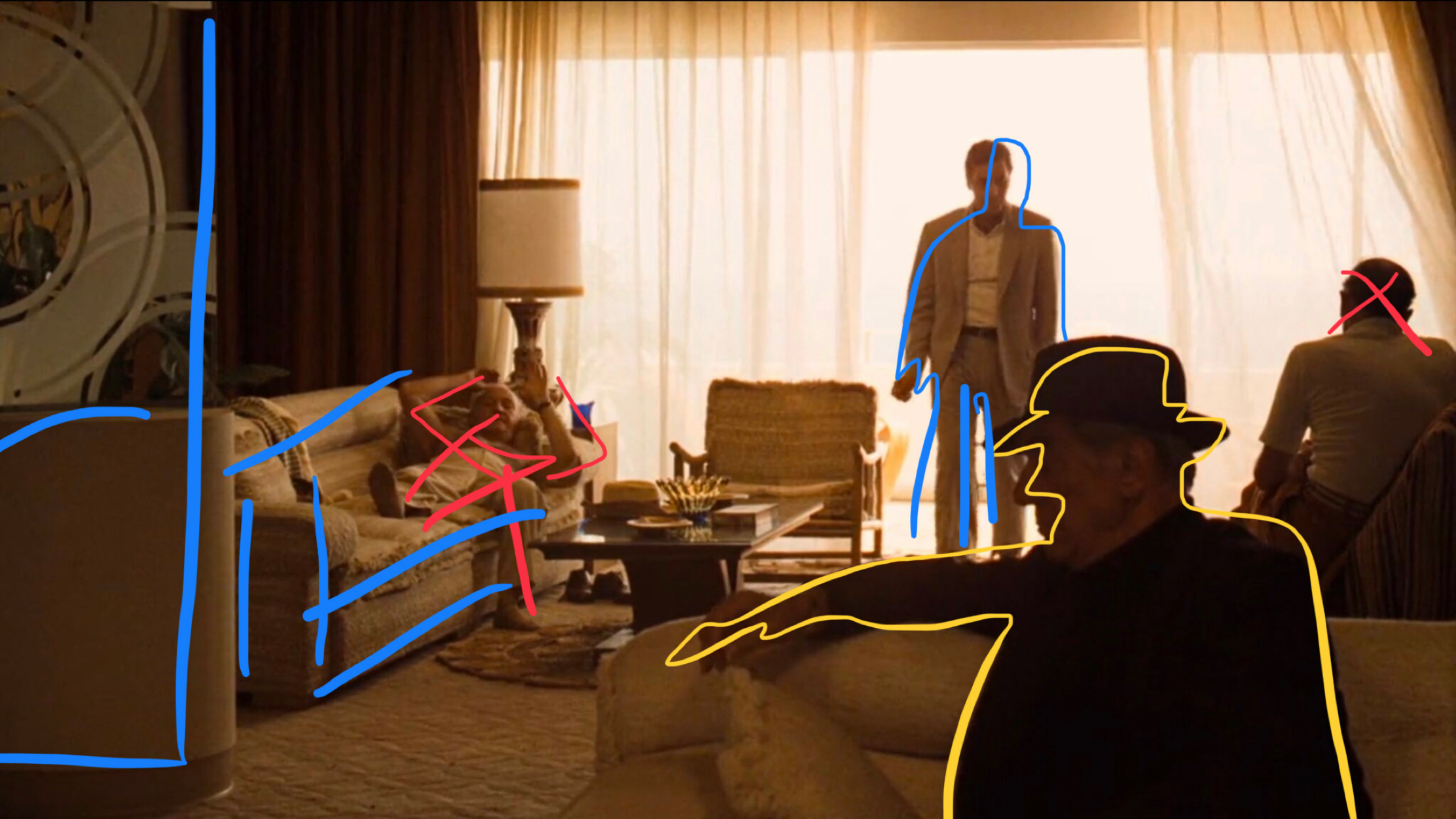
















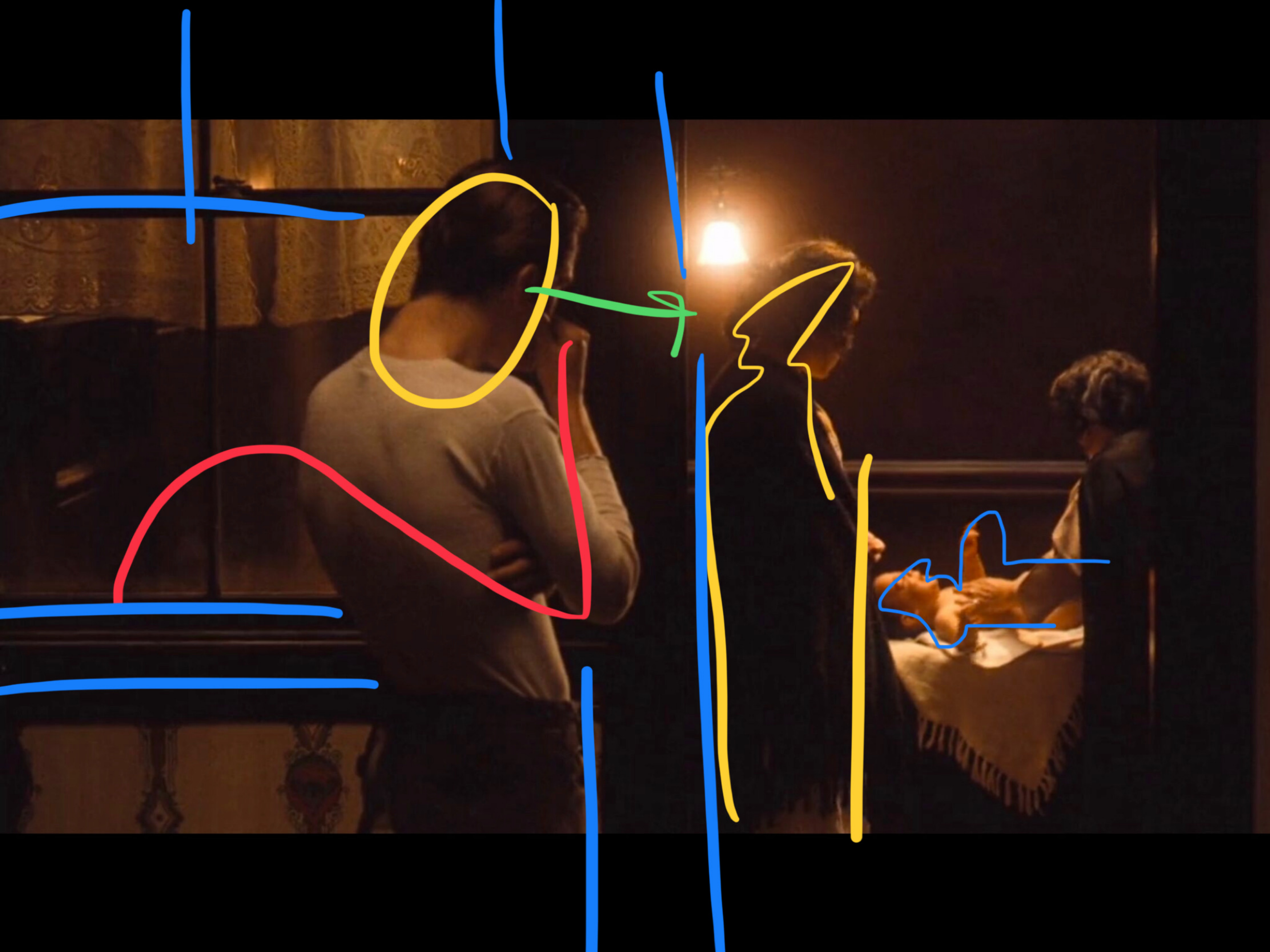












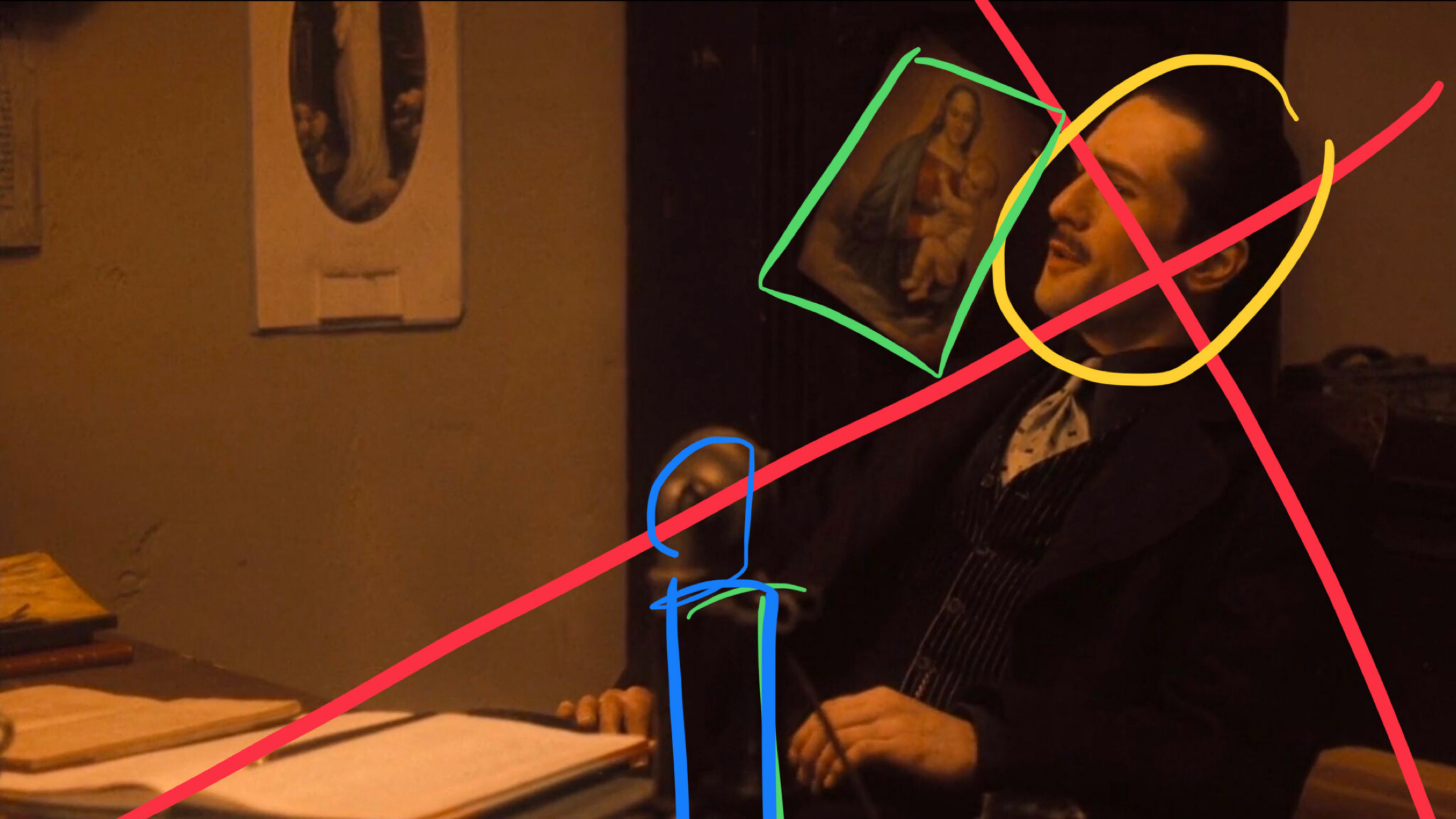
















10







10







GENCO IMPORT  
COMPANY  
THE MALLBERRY





514

GI

GENCO IMPORTING  
COMPANY

OLIVE  
OIL

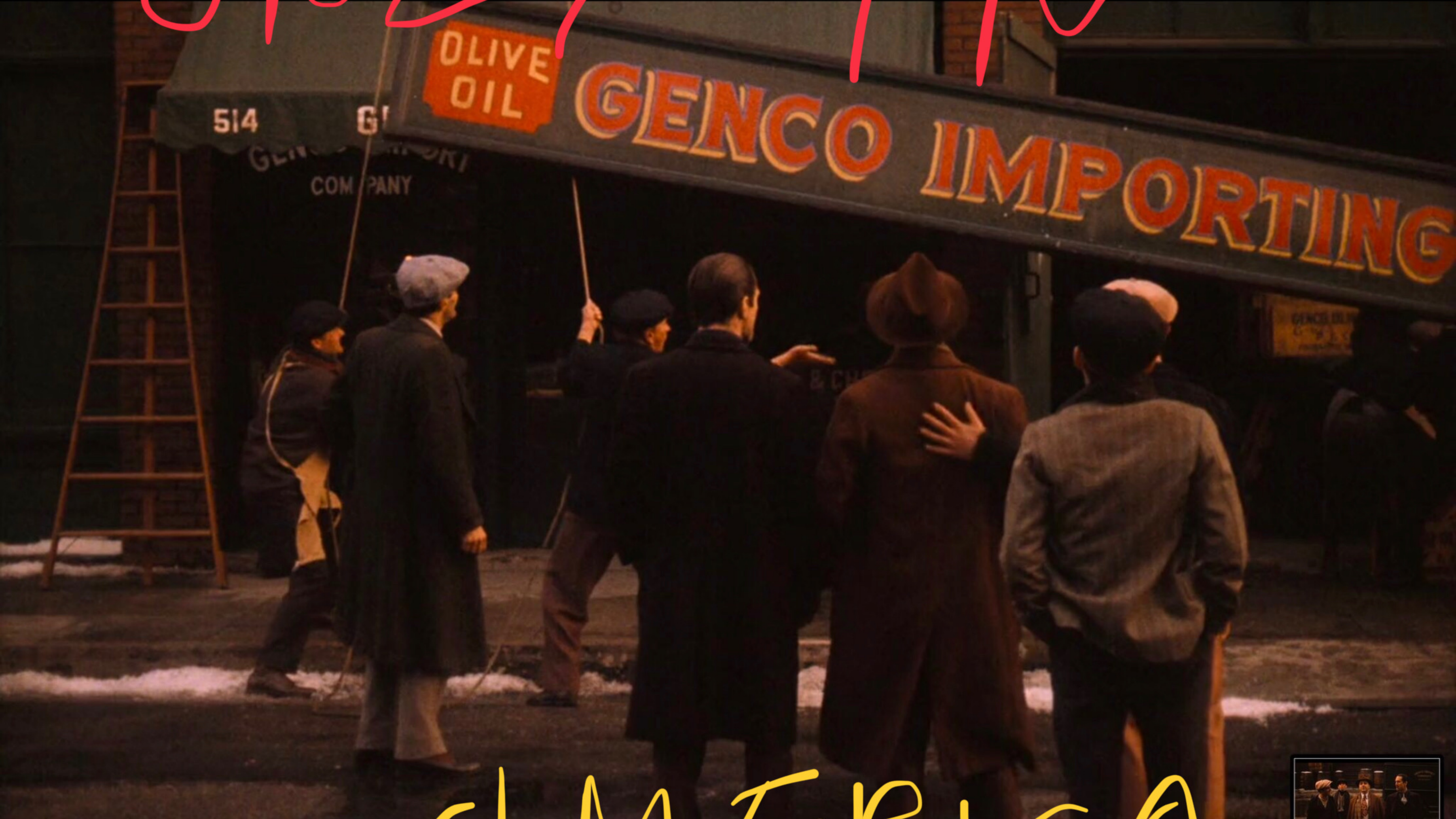
GENCO IMPORTING

GENCO  
IMPORTING  
COMPANY





ONLY IN



AMERICA

















# THE MICHAEL CORLEONE FAMILY

## KEY TO ACTIVITY CODE

- A: CURRENTLY IN JAIL FOR NARCOTICS
- B: AWAITING TRIAL FOR NARCOTICS
- C: PREVIOUS CONVICTION FOR NARCOTICS
- D: SUSPECTED OF BEING ACTIVE IN NARCOTICS
- E: GAMBLING
- F: SHYLOCKING
- G: LABOR RACKETEERING
- H: VENDING MACHINES AND/OR JUKE BOXES
- I: EXTORTION, STRONG ARM AND MURDER
- J: COUNTERFEITING
- K: CRIMINALLY RECEIVING
- L: ALCOHOL TAX VIOLATIONS

## BOSS



**MICHAEL CORLEONE**  
ALIAS  
"DON CORLEONE"

## SUCCESSOR TO

**VITO CORLEO**  
ALIAS  
"DON CORLEO"  
FBI # 397385  
DECEASED

## UNDERBOSS



**FREDO CORLEONE**

## CONSIGLIERI



**THOMAS HAGEN**



**SANTINO CORLEONE**  
ALIAS  
"SONNY"  
FBI # 473001  
DECEASED

## CAPOREGIME

## FORMER :

**PETER CLEMENZA**  
ALIAS  
"FAT CLEMENZA"  
FBI # 100375  
DECEASED

**LUCA BRASI**

FBI # 634  
DECEASED

**PAULI GAMBINO**

FBI # 742  
DECEASED

**FRANCIS**

ALIAS

"THE KID"

FBI # 324

## PRESENT:



**AL NERI**

FBI # 563241  
(G,K)



**ROCCO LAMPONE**

FBI # 32842  
(G)



**FRANK PENTANGELI**  
ALIAS  
"FRANKIE FIVE FINGERS"  
FBI # 64522  
(E,G,H,K)

## STONS - SOLDIERS



**GAETANO DE LUNA**  
ALIAS  
"GARY DEE"  
FBI # 892968  
(K,F)



**CALOGERO BADENI**

FBI # 144176  
(H)



**ETTORE BADENI**

ALIAS  
"HAND"  
FBI # 20077  
(J)



**ROBERTO NELECA**  
ALIAS  
"THUNDER BOB"  
FBI # 32013  
(K,F,G)



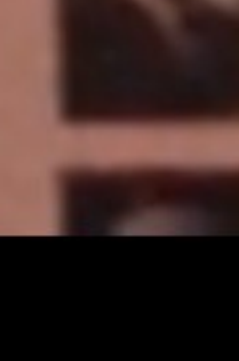
**RAFFO GERARDO**

FBI # 44230  
(I)



**SALVATORE PUNZIO**

ALIAS  
"SALLY PEE"  
FBI # 20077  
(J)



**NATALE PARDI**



**WILLIAM CICCONI**

FBI # 473001  
(E,K,G)



**CARMINE CORLEONE**

ALIAS

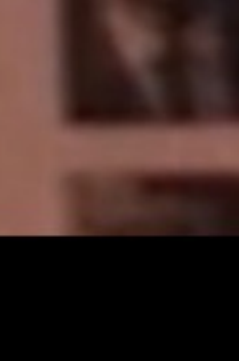
"THE PLUNGE"

FBI # 17001  
(E,K,L)



**SAMUEL CORLEONE**

FBI # 20077  
(J)



**ALPHONSE CORLEONE**

FBI # 20077  
(J)













4





